

TECHNIK[®]

Essentials 25

EQUIPPED TO CARE

Veterinary Equipment at its Very Best



MADE IN THE UK



Think Veterinary...

Think TECHNIK

03-11

Housing Systems

- Stainless steel kennel banks
- Cat pens
- Walk-in kennel doors
- Larger housing projects



11-14

Tables

- Consulting tables
- Examination tables
- Tub tables
- Grooming baths
- Surgical tables
- Electric lift tables
- Height adjustable vet workstations



15-16

Sinks

- Hand wash sinks
- Surgeon scrub sinks
- Lever arm sinks



17

Sinks, Taps & Accessories

- Sinks including the Dyson Airblade Wash+Dry Hand Dryer
- Taps
- Knee push valves
- Water saving spray hoses
- Mixer valves
- Sink spares



18-19

Practice Storage

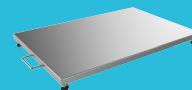
- Racking
- Modular cupboards
- Glass fronted cupboards
- Wall through cupboard



20

Weighing

- Portable scales
- Weigh scales
- Tables incorporating weigh scales
- Electric lift tables incorporating weigh scales



21

General

- Dental scaler
- Drugs cabinets
- Grooming bath



22-23

Lighting

- Wall mounted lights
- Ceiling mounted lights
- Mobile lighting
- Examination room lighting
- Operating room lighting
- Magnifying lights
- Woods UV lights



24-27

Hydrotherapy

- Canine hydrotherapy treadmills
- Canine hydrotherapy pools



Please visit our website or call our Sales team
if you do not find what you are looking for in this brochure.

Essentials is a sample of all the products TECHNIK Veterinary has to offer.
We also specialise in creating bespoke equipment, working in partnership
with you to produce exactly what you need.

Think Veterinary... Think **TECHNIK**

Whether you are refurbishing your practice or designing a new veterinary space, Technik Veterinary can help maximise your space efficiency and get the best solution for your budget. We have years of experience in designing veterinary environments for a range of applications including surgery, examination, critical care, waiting rooms and animal housing.

We can work with architects, project managers or yourselves from initial ideas right through to installation by our experienced engineers.

During the design process we can provide 3D model renders to give you an idea of the finished look and we also offer a virtual reality walkthrough so you can get a real feel for the space. Practice reaching for handles to open a door or check the working height of a table, this allows you to see if the ergonomics of the space are right before it's even built.

Our designs will always have the patient's comfort in mind including features like quiet sure close latches, removable dividers to accomodate larger patients and even the construction material, which is why we recommend our waterproof construction board cat pens instead of stainless steel if you treat a lot of cats.

Excellency in Design. Safety in Use.



Speak to us today to start the conversation about your project ideas and how we can help you with the following:

- Practice refurbishments
- New practice builds
- Room refurbishments
- Animal housing improvements

Call us today on +44(0)1952 885555 to discuss your idea or request a free site survey

TECHNIK Example Installations



TECHNIK can help design the best configuration for your space using our range of standard kennel banks, bespoke walk-in kennel doors and dividers. Our specialist designers produce graphical layouts for approval which helps clients visualise what the space will look like following installation. The combined use of glass and stainless steel provides a high visibility, hygienic solution. For more information on our project capabilities please go online to see our TECHNIK Projects brochure.



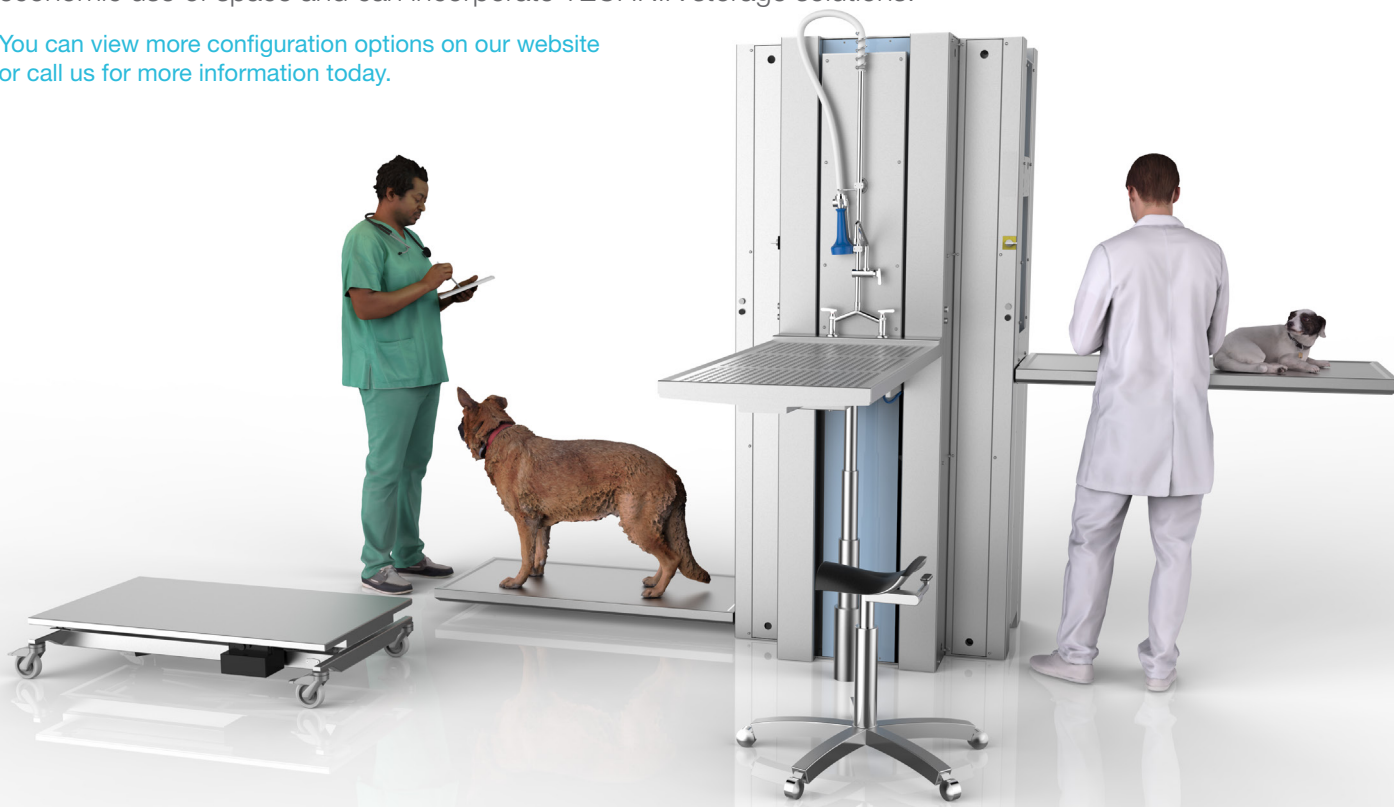


Height Adjustable Vet Workstations

Height adjustable vet workstations are ideal for creating a convenient, high-quality bespoke working area at the heart of your practice. Position the patient at a comfortable working height for the user and perform procedures with unrestricted movement around the patient.

The workstations can be specified with operating, tub, weigh scale and consultation tables. Installations can be fitted against walls or positioned centrally from floor to ceiling. Back to back configurations offer an economic use of space and can incorporate TECHNIK storage solutions.

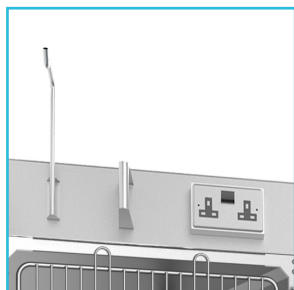
[You can view more configuration options on our website](#) or [call us for more information today](#).



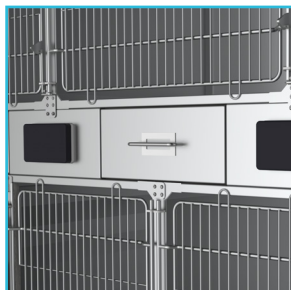
Guide to building your ideal kennel bank

Think KENNEL, think TECHNIK.

1. Decide how many kennels you will require. (Consider one double kennel with a divider instead of two single kennels to provide flexibility to accommodate larger patients.)
2. Do you require any services such as electricity or oxygen? We provide doors suitable for oxygen therapy and electrical rails with either IP rated or domestic sockets. Storage drawers can also be incorporated into the electrical rail.



ELECTRICAL SERVICE RAILS

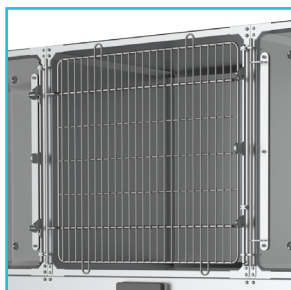


STORAGE DRAWERS

3. Decide on your door type. We offer glass or caged doors.



GLASS DOORS



CAGED DOORS

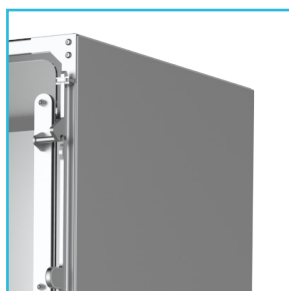
4. Do you require a mobile or static base? Mobile bases allow you to relocate the kennel bank if required. Static bases can have a plinth to improve hygiene. End and top panels not only complete the kennel bank and give it a finished look, they also improve hygiene.



ADJUSTABLE FEET



MOBILE BASE OPTIONS



TOP & END PANELS

Stainless Steel Kennel Sizes

Width x Height x Depth (mm)	Animal
433 500 500	
650 500 500	
650 500 700	
650 650 700	
650 800 700	
866 650 700	
866 800 700	
1083 500 700	
1300 500 700	
1300 650 700	
1300 800 700	
1516 650 700	
1516 800 700	
1732 650 700	
1732 800 700	

DIVIDABLE UNITS



We offer site surveys to look at your space and measure up so we can advise on the best configuration to suit your needs and budget. Call us to arrange a site survey today on +44(0)1952 885555

Kennel Bank Examples & Accessories

All our stainless steel kennel banks are manufactured in Britain

Suggested Layouts



Configuration includes: 2 x 650 x 650
and 1 x 1300 x 800

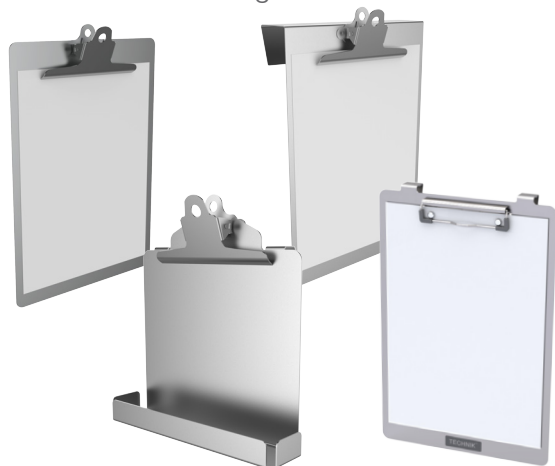


Configuration includes: 3 x 866 x 650
and 2 x 1300 x 800

For more
suggested
layouts visit
our website



TECHNIK has a range of kennel accessories to be used in conjunction with our kennel housing range.



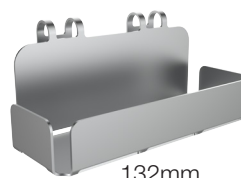
Clipboards

Part Number	Description
923/A4CLIPBO	A4
952/004013	A5 w/ pill tray
904/009143	A4 Glass Door Clipboard
904/009144	A4 Kennel Bar Door Clipboard
904/009006	A4 Walk-In Kennel Door Clipboard w/pill tray
904/009134	A4 Cat Pen Clipboard w/pill tray
952/004019	A4 Kennel Bar Door Clipboard w/ pill tray



Infusion Pump Holder

Part Number	Description
904/KIH001	Infusion Pump Holder - Kennel Bank Glass Doors
904/KIH002	Infusion Pump Holder - Walk-In Kennel Glass Doors
904/KIH003	Infusion Pump Holder - Kennel Bank Bar Doors



132mm



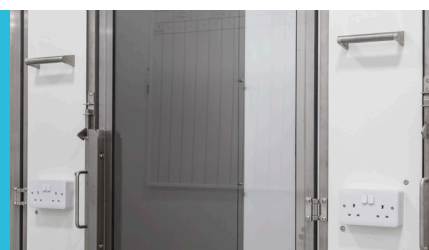
220mm

Pill trays

Part Number	Description
952/004062	Small - 132mm
952/004033	Large - 220mm



TECHNIK can integrate bars and hooks for IV drips or infusion pumps into kennel bank or walk-in kennel door designs. Call our sales team to discuss your next project today



Cat Pens

ISFM Cat Friendly Clinic Gold standard pens by TECHNIK

This British made range comprises a long stay pen (W1000 x H600 x D750mm) and a short stay pen (W600 x H600 x D750mm). Matched to these is a choice of cupboards or drawer units to make storage an easy option. Finally we have a range of electrical service rails that can also supply piped gas and plinths to elevate the pens to a more user friendly height. Stainless steel frames instead of storage solutions offer an affordable solution if additional storage is not required.

Features Include:

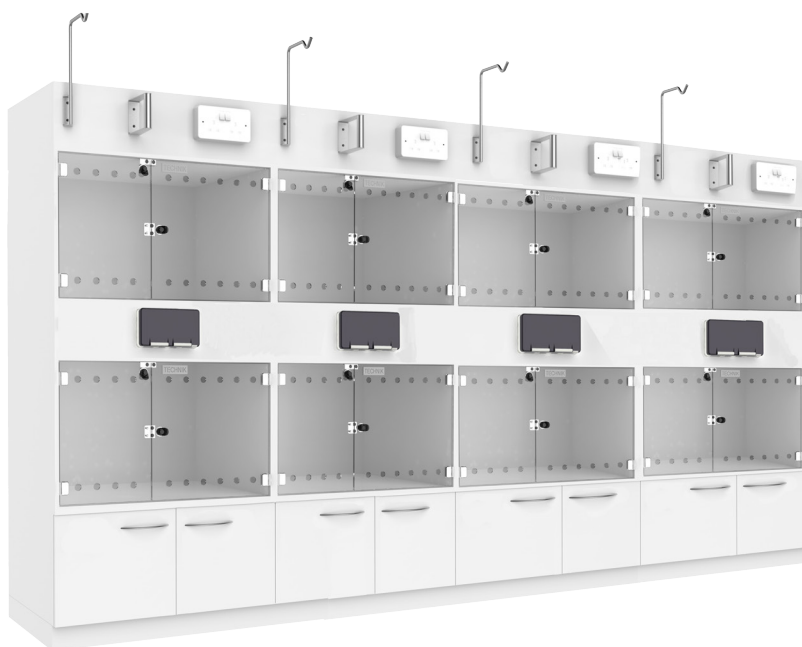
- Complies with ISFM Cat Friendly Clinic Gold Standard for Cat Welfare
- Medical grade close cell waterproof construction board (WCB) that does not harbour bacteria
- Tough and durable WCB with fully welded joints
- Cat friendly material. Cats do not like the cool feel of stainless steel on their paws. These WCB designs are better for maintaining core body temperature
- Patient friendly latches that are a quiet push button operation
- Cupboards and drawers for convenient storage
- Electrical and service rails for the distribution of electrics and oxygen
- Glass doors lend themselves to a more domestic appearance. They are also easy to keep clean

WCB Cat Pen Specifications

Part Number	Model
904/SK606075P	600 x 600 x 750mm Pen
904/DK106075P	1000 x 600 x 750mm Pen
904/DK1206075P	1200 x 600 x 750mm Pen
904/BC604575P	600mm Cupboard
904/BC1004575P	1000mm Cupboard
904/BCD604575P	600mm Drawer Unit
904/BCD1004575P	1000mm Drawer Unit
904/ERI1601575P	Electrical Service Infusion Rail w/bars & hooks
904/KP166075P	Floor Plinth to Suit Pen Bank
904/CS513030P	Shelf for perching/hiding
904/KP164575	1600mm Stainless steel plinth



Below are typical configurations of WCB cat pens:





Walk-In Kennel Doors

Simply the finest range of walk-in kennels available.



[+] FULL CAGE DOOR
904/WKD78200-2



[+] COMBI DOOR
904/WKDH78200



[+] FULL GLASS DOOR
904/WKDG7825200

All TECHNIK Kennel Doors

Unbeatable value, full stainless steel frame and door assembly with quiet close hinges and our unique “Sure Close” latch mechanism.

Full Cage Doors

A caged style door with full length bars for ventilation and observation.

Combi Doors

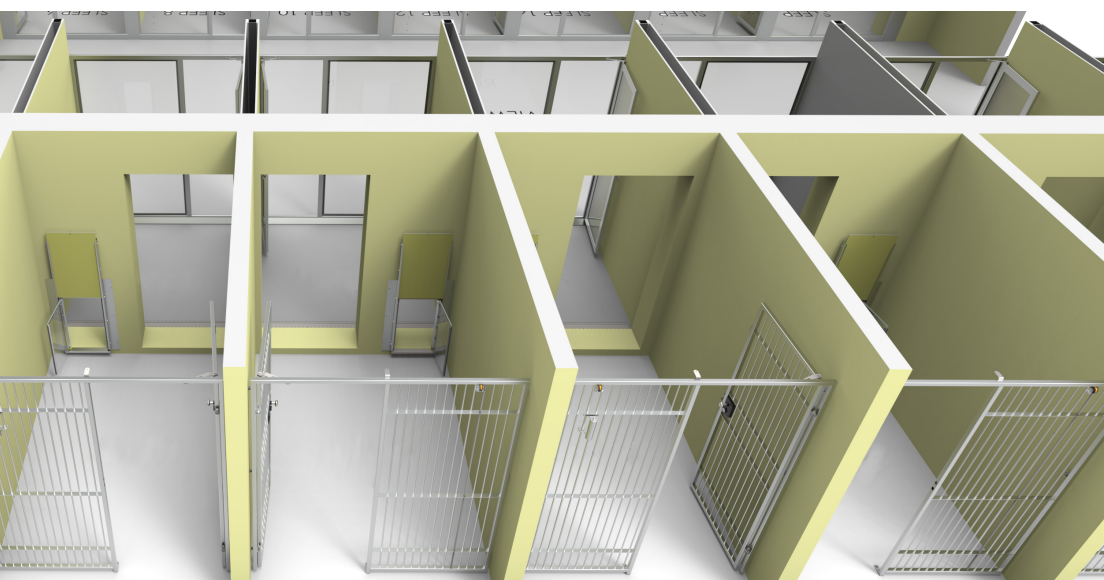
A combination style door with low level toughened safety glass for ease of cleaning and high level bars for ventilation and observation. Satin glass and tinted finishes available for patient privacy.

Full Glass Doors

Toughened safety glass available in clear, satin and tinted finishes. Designed to create a quiet environment ideally suited for patients requiring high levels of observation.

Critical Care Doors

A glass door with a bracket designed to hang critical care infusion pumps from. Designed to create an environment suited for patients who require high levels of observation and the use of an infusion pump.



Please call us for information on our run gates, pop hatches, drains, glazed fronts and kennel dividers to complete your **walk-in kennel project**

Tables

Consulting Tables

Stainless steel removable top for easy cleaning with aluminium underframe. Flat sheet top. Mobile version available. Includes mat and angle strips.



Static version

Part Number	Dimensions
924/A440091	L 600 x W 600 x H 838mm
924/A440313	L 900 x W 600 x H 838mm
924/A440679	L 1200 x W 600 x H 838mm
924/A441134	L 1500 x W 600 x H 838mm
924/A441590	L 1800 x W 600 x H 838mm

Mobile version

Part Number	Dimensions
924/A440091-M	L 600 x W 600 x H 838mm
924/A440313-M	L 900 x W 600 x H 838mm
924/A440679-M	L 1200 x W 600 x H 838mm
924/A441134-M	L 1500 x W 600 x H 838mm
924/A441590-M	L 1800 x W 600 x H 838mm

Stainless Steel Eco Tables

Stainless steel underframes. Stainless steel top and all adjustable feet. Available in several sizes. Includes mat and angle strips.



Static version

Part Number	Model
939/SEA240091	L 600 x W 600 x H 838mm
939/SEA240313	L 900 x W 600 x H 838mm
939/SEA240679	L 1200 x W 600 x H 838mm
939/SEA241134	L 1500 x W 600 x H 838mm
939/SEA241590	L 1800 x W 600 x H 838mm

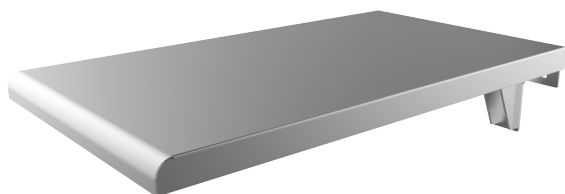
Mobile version

Part Number	Model
939/SEA240091-M	L 600 x W 600 x H 936mm
939/SEA240313-M	L 900 x W 600 x H 936mm
939/SEA240679-M	L 1200 x W 600 x H 936mm
939/SEA241134-M	L 1500 x W 600 x H 936mm
939/SEA241590-M	L 1800 x W 600 x H 936mm



Fold Up Tables

Fold up to use, fold down to store. Stainless steel construction. Wall mounted. Flat sheet top. Safe working load 25kg (can vary, dependent on wall type and fixings used).

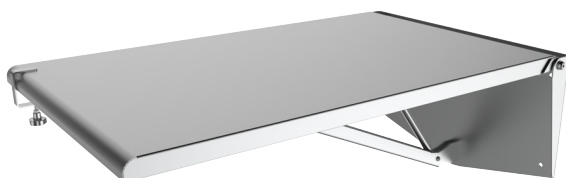


Part Number	Dimensions
939/004001	L 700 x W 400 x H 37mm
939/004002	L 850 x W 500 x H 37mm

Storage Position

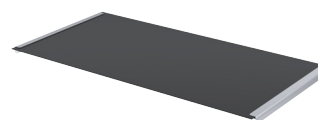
Fold Down Tables

Fold down to use, fold up to store. Stainless steel construction. Wall mounted. Flat sheet top. Includes mat and angle strips. Safe working load 25kg (can vary, dependent on wall type and fixings used).



Part Number	Dimensions
939/004003	L 915 x W 560 x H 340mm
939/004004	L 1120 x W 560 x H 340mm

Storage Position



Tub Tables

Whether you are looking for a tub table for dentistry, grooming, surgical preparations or post mortems, TECHNIK are sure to have a wet table for you.

Tub Table

All 304 grade stainless steel construction. Removable grill racks. Undershelf with adjustable legs. Split level to tackle the largest of applications. Knee space to allow comfort for the user when seated. **Taps not included, water saving spray hose recommended.**



Part Number	Dimensions
925/006000	L 1200 x W 610 x H 915mm
925/006001	L 1600 x W 610 x H 915mm



Tub Table with Under Cupboard

All 304 grade stainless steel construction. Removable grill racks. 2 door lockable cupboard. Split level to tackle the largest of applications. Knee space to allow comfort for the user when seated. **Taps not included, water saving spray hose recommended.**

Part Number	Dimensions
925/006002	L 1200 x W 610 x H 915mm
925/006003	L 1600 x W 610 x H 915mm



Slimline Tub Table

All 304 grade stainless steel construction. Removable grill rack. Shallow depth specifically designed for dentistry. Knee space to allow comfort for the user when seated. Elegant slimline design. Stainless steel tubular legs. Removable 3 piece grill rack. **Taps not included, water saving spray hose recommended.**

Part Number	Dimensions
925/006020	L 1300 x W 655 x H 900mm



Tub Table with Under Cupboard & Drawers

All 304 grade stainless steel construction. Removable grill racks. Single lockable cupboard and three drawers. Split level to tackle the largest of applications. Knee space to allow comfort for the user when seated. **Taps not included, water saving spray hose recommended.**

Part Number	Dimensions
925/006004	L 1600 x W 610 x H 915mm

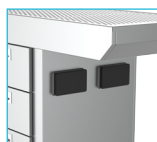
Water Saving Spray Hoses

Part Number - 917/27032

The tub tables do not come with a tap included. We recommend this water saving spray hose.



Electrical Points



Slimline with Under Cupboard & Drawers

All 304 grade stainless steel construction. Removable grill rack. Shallow depth specifically designed for dentistry. Knee space to allow comfort for the user when seated. Elegant slimline design. 3 configurations available - single cupboard with three drawers, single cupboard with three drawers and 2 x IP double electrical sockets and a double cupboard model. **Taps not included, water saving spray hose recommended.**

Part Number	Dimensions
925/006022 - Sgl Cupboard	L 1300 x W 655 x H 932mm
925/006024 - Electrical	L 1602 x W 655 x H 932mm
925/006021 - Dbl Cupboard	L 1300 x W 655 x H 932mm

Taps available page 17

Electric Lift Tables

TECHNIK have a range of electric lift tables providing a hygienic and durable solution to moving and transferring patients, reducing the risk of staff injury.



Ultrasound Padded-top Lift Table

Our convenient padded-top ultrasound lift table offers complete durability and strength. Handling patient lifting with ease and efficiency thanks to its remarkable loading capacity of 90kg.

Part Number	Dimensions
-------------	------------

939/003019	L 1350 x W 650 x H 286-1042mm max height
------------	--



Electric Lift Tables

Ultra smooth and quiet operation. Rechargeable battery powered, with handset control. All stainless steel construction. Non-mark lockable swivel castors. Tie down cleats. 90kg capacity.

Part Number	Dimensions
-------------	------------

939/003001	L 1200 x W 640 x H 233-989mm
------------	------------------------------



Electric Lift Tub Table

Height adjustable mobile electric lift tub table with removable top section allowing dental and wet procedures to be carried out with ease. **Taps not included, water saving spray hose recommended.**

Part Number	Dimensions
-------------	------------

939/003003	L 1200 x W 640 x H 233-989mm
------------	------------------------------

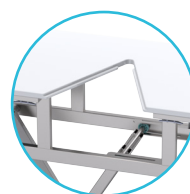


Electric Lift Tables

Ultra smooth and quiet operation. Rechargeable battery powered, with handset control. All stainless steel construction. Non-mark lockable swivel castors. 60kg capacity.

Part Number	Dimensions
-------------	------------

939/003018	L 1100 x W 510mm
------------	------------------



Electric Lift Table with Drainage Tray

Drainage tray with removable grill and top cover on electric lift table. Comes with removable mat and clips.

Part Number	Dimensions
-------------	------------

939/003007	L 1600 x W 640 x H 220-990mm
------------	------------------------------

Ultrasound on Electric Lift Table

Trespa top table allows lifting of patients and ultrasound examination via removable section in table top. Cut outs available in two shapes.

Part Number	Dimensions
-------------	------------

939/003015 - Circular	L 1350 x W 600 x H 220-910mm
-----------------------	------------------------------

939/003016 - V Shaped	L 1350 x W 600 x H 220-910mm
-----------------------	------------------------------

Surgical Tables

These tables have been designed with surgical applications in mind.



Mobile Flat Top Operating Tables

High quality, cost-effective, mobile flat top operating table. Rechargeable battery can last up to two weeks between charges. 100kg capacity.

Part Number	Dimensions
939/001021	L 1370 x W 600 x H 640-1040mm

V-Top Tables

7.5 - 67.5° tilt. Rechargeable battery powered, foot operation. Moveable side panels for patient positioning. Manual tilt. Tie down cleats. 300mm height adjustment. Feet are adjustable +/-16mm.

Part Number	Dimensions
939/001000 - Static	L 1300 x W 620 x H 896-1196mm
939/001001 - Mobile	L 1300 x W 620 x H 944-1244mm



Flat Top Operating Tables

Rechargeable battery powered. 0 - 55° tilt. Foot operation. Recessed top for fluid retention. Manual tilt. 300mm height adjustment. 8 Tie down cleats. Feet are adjustable +/-16mm.

Part Number	Dimensions
939/002013 (Mobile)	L 1500 x W 600 x H 686-1186mm
939/002013-S (Static)	L 1500 x W 600 x H 632-1132mm

V-Top Deluxe Operating Tables

Tapering v-top table design. Dual action 0-24° electric tilt. Gas strut assist side panels. Rechargeable battery powered with foot operation. Tie down rail with cleats.

Part Number	Dimensions
939/001002	L 1400 x W 620 x H 922 - 1345mm



NEW

Ultrasound Trespa Lift Table

Our exceptional twin column ultrasound lift table is the essence of durability and strength. Handling patient lifting with ease and efficiency thanks to its remarkable loading capacity of 120kg.

Part Number	Dimensions
939/012000	L 1700 x W 550 x H 840-1340mm



Caesarean Section Table

Mobile recessed top table constructed from grade 304 stainless steel designed for caesarean sections.

Part Number	Dimensions
939/004020	L 1500 x W 700 x H 900mm

Hand Wash Sinks



Surgeon Scrub Sinks

Ideal for use in operating theatres and examination rooms. Hands free operation. Deep splashback. 1 station unit - L 574 x W 520 x H 687mm. Mixer valve not included.

Part Number	Model
917/005011-K	1 Station (Knee Push)
917/005011-M	1 Station (Sensor)
917/005011-BS	1 Station (Battery Sensor)
917/005012-K	2 Station (Knee Push)
917/005012-M	2 Station (Sensor)
917/005012-BS	2 Station (Battery Sensor)

Hand Wash Station Sinks

Superior quality. Hands free operation. 1 station unit - L 575 x W 420 x H 537mm. Mixer valve not included.

Part Number	Model
917/006011-K	1 Station (Knee Push)
917/006011-M	1 Station (Sensor)
917/006012-K	2 Station (Knee Push)
917/006012-M	2 Station (Sensor)



Eco Sinks

Low maintenance. Water saving. Mixer valve not included. Sensor is either mains powered or battery operated.

Part Number	Model	Dimensions
917/038011-K	1 Station (Knee Push)	L 500 x W 350 x H 377mm
917/038011-M	1 Station (Mains)	L 500 x W 350 x H 377mm
917/038011-BS	1 Station (Battery)	L 500 x W 350 x H 377mm



Lever Arm Sinks

Superior quality.

Part Number	Dimensions
917/006111	L 750 x W 550 x H 750 mm
917/006118	L 1400 x W 550 x H 750mm



Battery Operated Sensor Hand Wash Sinks

Touch-free sensor operation with no mains required. Water saving.

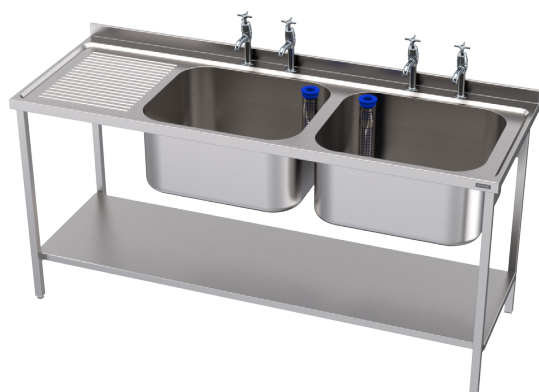
Part Number	Model
917/006011-BS	Hand Wash 1 Station Battery Sensor
917/006012-BS	Hand Wash 2 Station Battery Sensor

Mini Hand Wash Sink

Compact hand wash sink which can be mounted on a flat wall or in a corner.

Part Number	Dimensions
917/004000K	L 300 x W 300 x H 270mm

Utility Sinks



Utensil Sink

Utensil sink with removable shelf available in single bowl single drainer, double bowl with double drainer and double bowl with single drainer. Single drainer models have left drainer and right drainer options.

Part Number	Model	Dimensions	Price
917/036003R	S Bowl S Drnr Right	L 1200 x W 650 x H 850mm	
917/036003L	S Bowl S Drnr Left	L 1200 x W 650 x H 850mm	
917/036005R	D Bowl S Drnr Right	L 1800 x W 650 x H 850mm	
917/036005L	D Bowl S Drnr Left	L 1800 x W 650 x H 850mm	
917/036006-D	D Bowl D Drnr	L 2400 x W 650 x H 850mm	



Janitors Sink



Mop bucket Sink



Janitors sinks

Janitors sink incorporates mop bucket sink and a hand wash sink and comes complete with a mixer tap. Mop bucket sink is wall mounted and has a pressed bowl.

Part Number	Model	Dimensions
917/27276	Janitors Sink	L 600 x W 500 x H 900mm
917/27275	Mop Bucket Sink	L 500 x W 520 x H 780mm



Wall Mounted Belfast Sink

Heavy duty wall mounted belfast sink with right hand drainer measuring 1078mm. Cantilever shelf with clearance of 400mm.

Part Number	Dimensions
917/001341	L 1650 x W 700 x H 751mm



Belfast Sinks

Fully stainless steel belfast sinks available in a variety of configurations. Small, medium, large and triple bowl models don't have a drainer. Single bowl double drainer model also available.

Part Number	Model	Dimensions
917/001003	Small	L 774 x W 867 x H 1086mm
917/001007	Medium	L 989 x W 867 x H 1086mm
917/001001	Large	L 1319 x W 867 x H 1086mm
917/001073	Sgl Bwl Dbl Dnr	L 1789 x W 876 x H 1090mm
917/001101	Triple Bwl	L 2000 x W 876 x H 1070mm

Sinks featuring Dyson technology

Sinks that improve washroom hygiene practices...
Incorporating the **dyson** **airblade** wash+dry



- For general practice use
- Airblade™ Wash+Dry technology in a tap. Elimination of waste / tissues
- Unheated, filtered air that removes water from the hands. Touch-free operation drying hands hygienically in just 12 seconds
- Costs up to 69% less to run than other hand dryers and up to 97% less than paper towels¹
- Produces 4.0g of Co2 per dry – up to 74% less than other hand dryers and up to 71% less than paper towels²
- Approved by HACCP
- 5 year guarantee
- HEPA filter removes 99.9% of particles the size of bacteria
- Hygienic and robust 304 grade stainless steel sinks

¹ For calculations visit dyson.co.uk/calcs

² In collaboration with Carbon Trust, Dyson has produced a method to measure the environmental impact of electrical appliances and paper towels. The carbon calculations were produced using GaBi software provided by PE International, based on product use over 5 years and using the US as a representative country of use. Dry times for products were evaluated using DTM 769.

Basin Mounted Sink

1-5 station available

Basin Mounted Back to Back Sinks

2, 4, 6, 8, or 10 station available

Sink Accessories & Taps



Mixer Valves

Part Number - 917/30066



Knee Push Valves

Part Number - 917/30011



Water Saving Spray Hoses

Part Number - 917/27032



Sensor Tap Conversion Kit

Part Number - 917/006041



Basin Mounted Taps

Part Number - 917/27110



Replacement Seal kits

Part Number - 917/30055



Lever Taps

Part Number - 917/27109

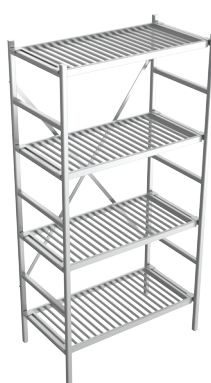
Go online to view
our complete
range of taps and
accessories

Practice Storage

Sheet Construction



Runged Construction



Aluminium Modular Racking

Designed for general storage applications. Supplied flat packed in easy to assemble modules. Available in aluminium or stainless steel. Each shelf has a load capacity of 125kg. Each kit contains 4 shelves, 2 end frames, 1 cross brace. *Prices below for aluminium racking. Call for stainless steel racking prices.

Sheet

Part Number	Length
907/MR0750-S	750mm
907/MR1000-S	1000mm
907/MR1250-S	1250mm
907/MR1500-S	1500mm

Runged

Part Number	Length
907/MR0750-R	750mm
907/MR1000-R	1000mm
907/MR1250-R	1250mm
907/MR1500-R	1500mm



Stainless Steel Storage Cupboard

Stock item, tall cupboard ideal for general storage. Double lockable hinged doors.

Part Number	Dimensions
919/003003	L 910 x W 453 x H 1880mm



Stainless Steel Cupboard With Glass Door

Useful storage solution featuring a 1000mm double cupboard and a 500mm single cupboard with 4 drawers. Double cupboard has internal shelves, single cupboard has 3 x hooks on the left and right hand side. Kick plate surrounding adjustable legs for hygiene. Supplied in two pieces.

Part Number	Dimensions
919/001003	L 1500 x W 400 x H 2000mm



A



C



E



B



D



F

Modular Cupboards

Range of modular cupboards in a variety of configurations, made from stainless steel these cupboards are durable, easy to clean and hygienic. With a sloped top and internal shelf, these cupboards are an ideal storage solution for hygienic areas.

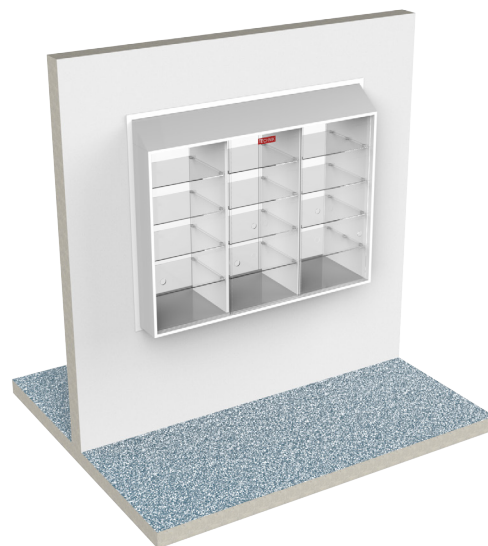
Part Number	Type	Dimensions
919/002090	A	L 1200 x W 620 x H 850mm
919/002091	B	L 1200 x W 620 x H 850mm
919/002092	C	L 1200 x W 620 x H 850mm
919/002095	D	L 623 x W 620 x H 850mm
919/002094	E	L 1200 x W 620 x H 850mm
919/002093	F	L 1200 x W 620 x H 850mm

Wall Through Cupboard

Dual wall cupboard accessible from both sides of a dividing wall available in waterproof construction board (WCB) or stainless steel.

Waterproof construction board (WCB) dual wall cupboard has an interior divided into 3 equal sections measuring 500x1000mm high with four fixed glass shelves and three glass sliding doors. Dimensions - L1500 x W500 x H1100mm

Stainless steel wall through cupboard designed for transferring items from low care to high care environments. Dual cupboards have glass doors with magnetic catches and 6 internal stainless steel shelves. Dimensions - L1000 x W500 x H700mm



Part Number	Type
904/028000	Dual Wall Cabinet - WCB
901/802807	Wall through cupboard - Stainless Steel



TECHNIK can manufacture storage solutions or practice furniture from stainless steel or waterproof construction board, call for more information.

For more furniture ideal for veterinary environments from waiting room seating, staff lockers, theatre trolleys, shoe benches and coat hooks. Go online to view the range.

Changing Room Equipment



Waiting Room Furniture



Equipment Trolleys

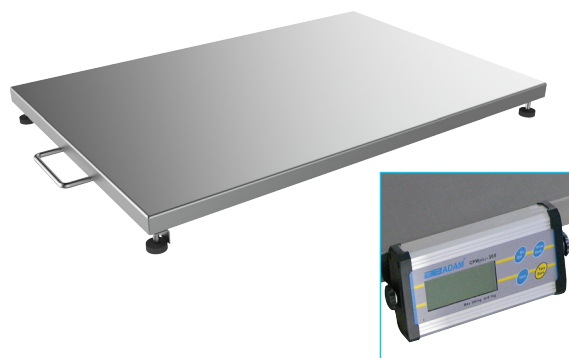
Weighing



Portable Scales

Ideally suited for cats. 20kg x 10g with lbs conversion. Slim profile and lightweight. Easy to clean platform. Large, easy to read LCD display. Simple battery operation.

Part Number	Platform Dimensions
923/012000	L 500 x W 350 x H 50mm
923/012001	



Weigh Scales

Stainless steel platform. Reads in kg, lbs and ounces. Backlit display. Rechargeable batteries (60 hour life) and charger. Large 900 x 600mm weighing area. Anti-slip mat. 150kg or 300kg limit model options.

Part Number	Platform Dimensions
923/012002 - 150kg	L 900 x W 600 x H 80mm
923/012003 - 300kg	L 900 x W 600 x H 80mm



Weigh Scales on Cupboard

Stainless steel construction. Variety of cupboard options available. Water resistant, keyboard with backlit display. Maximum capacity 150kg.

Part Number	Dimensions
952/011152	L 1093 x W 508 x H 976mm



Examination Weigh Table

Stainless steel construction, with Aluminium underframe. Water resistant, keyboard with backlit display. Maximum capacity 150kg.

Part Number	Platform Dimensions
952/007534	L 1093 x W 508 x H 858mm



Weigh scales on Electric Lift Table

Electric lift table incorporating a weigh scale. Max load 60kg. Ultra quiet and smooth operation. Water resistant, keyboard with backlit display. Rechargeable battery with handset operation.

Part Number	Dimensions
939/003018	L 1100 x W 510mm



Height adjustable vet workstations (page 5) can be specified with a weigh scale

Dental Consumables also available call for more info



B5 Ultrasonic Dental Scaler

Ultrasonic scalers provide faster scaling than manual methods and are much kinder than magnetostriuctive (cavitron) scaling with less bleeding and damage to teeth making it an indispensable appliance in any veterinary practice in the prevention and treatment of dental disease.

Part Number	Dimensions
953/USB5CT	L 195 x W 145 x H 77mm



Drugs Cabinets

All models come with lock bolt device for security. Comply with level 1 security for storage of medicines.

Part Number	Dimensions
919/000100	L 300 x W 150 x H 250mm
919/000101	L 570 x W 160 x H 520mm
919/000102	L 570 x W 200 x H 520mm

Dental tub tables can be found on page 12



Front Access Grooming Bath

Ideal for washing and grooming small and large animals. Other access options available. Door can either be right or left handed.

Part Number	Dimensions
917/006116	L 1200 x W 600 x H 1233mm



Dental Electric Lift Tables

Perfect for use within a compact space, or a multi-use room. Removable grill racks. Rechargeable battery powered. 90kg capacity. Available as tub table (pictured above) and solid top lift table with inset tray.

Part Number	Dimensions
939/003003 - Tub Table	L 1200 x W 640 x H 233 - 989mm
939/003007 - Solid Top	L 1600 x W 640 x H 233 - 989mm



Brandon Medical is an award winning, UK medical technology company with over 40 years healthcare experience.

Brandon Medical's lighting products, operating theatre lights, medical video and medical AV systems are in use throughout the world.



Coolview CLED23 **HD**

60,000 LUX @ 0.5m. Long Life LED lasting 30,000 hours. Adjustable colour temperature, with no infra-red radiation, avoiding heat exposure.

Specifically designed to help eliminate operator fatigue and eye strain. Utilising an antimicrobial active substance which is moulded into the lamp head to inhibit the growth of micro organisms and bacteria. Boasting 360 degree rotation, the CLED23 Coolview can suit any procedure, without the restriction of cables and arms.

Part Number	Model
982/002030	Wall Mounted
982/002031	Mobile Model
982/002032	Ceiling Mounted
982/002033	Back Plate Light
982/002034	Desk Mounted
982/002035	Rail Mounted



Astramax **HD**

150,000 LUX @ 1.0m. Variable colour temperature from 3,100 – 5,000° Kelvin, 5 dimming levels. The only surgical lighting with near perfect colour rendition across the full visible spectrum. The light intensity can be altered through 5 easily selectable settings between 5% and 100%, providing the most suitable intensity for any type of procedure. Astramax standard features include:- Red Balance Control, Fat Beam Illumination, Shadow Control, Infection Control & Long Life Astramax LED's of 60,000 hours which equates to more than 20 years of normal use. *Ceiling mounted models require additional fixing kit

Part Number	Model
982/002000	Wall Mounted
982/002001	Mobile Model
982/002002	Single Ceiling
982/002003	Dual Ceiling
982/002004	Ceiling Mount Tandem



Astralite **HD**

HD-LED lights with either 70,000 or 100,000 LUX @ 1.0m providing ample light for even the most demanding procedure. Large illuminated area of 180mm diameter targets light on to the wound area with a focus depth of 600mm to penetrate into deep cavities. The LED life is 50,000 hours. The 5 rotations of the light head allow easy positioning of the light beam from any angle. The Astralite "Auto On" feature turns the light on as soon as the user touches any control. Astralite light heads are a closed design, sealed to IP54 against dust and moisture, smooth surfaces makes cleaning easy.

Part Number	Model
982/002100	Astralite 70,000 LUX Wall Mounted
982/002101	Astralite 70,000 LUX Mobile Lamp
982/002102	Astralite 70,000 LUX Ceiling Mounted
982/002106	Astralite <i>eLite</i> 100,000 LUX Wall Mounted
982/002107	Astralite <i>eLite</i> 100,000 LUX Mobile Mounted
982/002108	Astralite <i>eLite</i> 100,000 LUX Ceiling Mounted
982/002109	Astralite <i>eLite</i> 100,000 LUX Mobile Light With Battery Back Up
982/002110	Astralite <i>eLite</i> 100,000 LUX Tandem Mounted

Speak to our Sales team for pricing on +44(0)1952 885555

Optica LED Magnifier & UV Woods Light

The only LED magnifier on the market which can be ceiling mounted. Magnifier comes as standard with optional UV Woods Light, ideal for veterinary use. This Woods Light does not need a blacked out room to be used. 6,000 LUX @ 0.15m. Diameter of 157mm for magnifier. Models available as ceiling mounted, mobile, desk mounted, rail mounted and wall mounted. Spring balanced arm allows a reach of up to 142cm without the lamp head drifting.

Part Number	Model
982/002201	Desk Mounted Magnifier
982/002206	Desk Mounted UV
982/002203	Rail Mounted Magnifier
982/002208	Rail Mounted UV
982/002205	Ceiling Mounted Magnifier
982/002210	Ceiling Mounted UV
982/002202	Mobile Magnifier
982/002207	Mobile UV
982/002204	Wall Mounted Magnifier
982/002209	Wall Mounted UV



Life's better with HYDRO PHYSIO[®]

UNDERWATER TREADMILLS



UK MANUFACTURED
Visit Our Showroom

Call for details: +44 (0)1952 885555
www.HYDROPHYSIO.com



Delivering canine care with confidence

With more than 20 years of designing and manufacturing canine underwater treadmills and pools, we are passionate about helping practitioners deliver enhanced health, recovery and fitness outcomes for patients.

Whether you are looking to support your patients with post-surgery recovery, pain management, weight loss or fitness improvement, our aquatic exercise products give you the tools to provide an exceptional standard of canine care.



Veterinary Community

Our treadmills can help veterinary professionals improve recovery and pain management outcomes for patients.



Hydrotherapy

Our products enable hydrotherapists to support patients in boosting their overall fitness levels and quality of life.



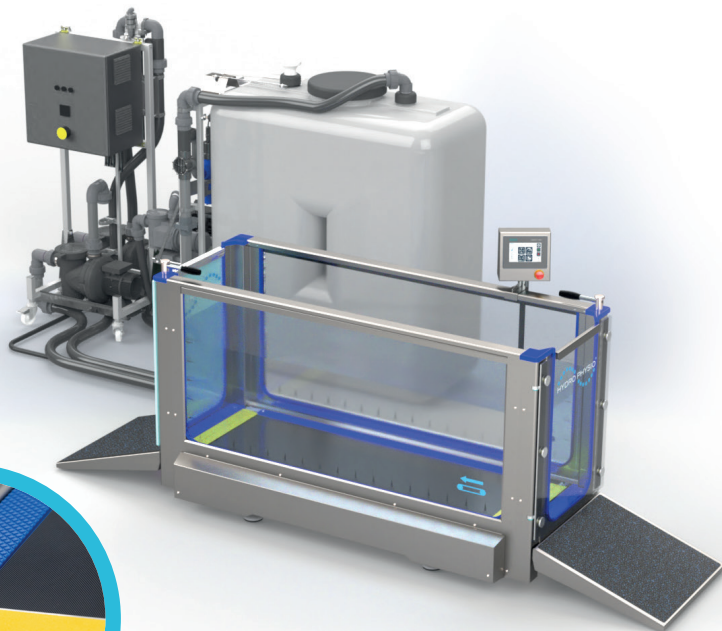
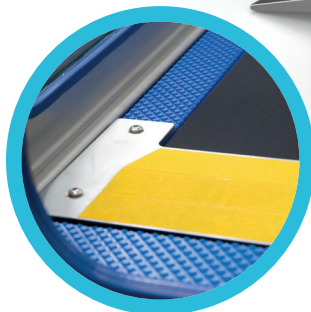
Animal Welfare

Animal welfare professionals can use our treadmills to enhance the health of vulnerable canines.



MOD and Police

Our canine hydrotherapy treadmills help working dogs maintain outstanding levels of fitness and agility.



Features

- MEDICAL-GRADE STAINLESS STEEL WALK-THROUGH DESIGN WITH ENTRY/EXIT DOORS
- TWO-STAGE SAFETY DOOR LATCH FOR STRAIGHT FORWARD OPERATION
- STRUCTURAL GLASS WITH ALL-ROUND PATIENT VISIBILITY
- SIDE PLATFORMS FOR THERAPIST
- ANTI-SLIP SURFACES ON CHAMBER AND RAMP
- REVERSIBLE BELT DIRECTION
- WATER DUMP VALVE ON CHAMBER
- POWERED INCLINE
- POWERED TREADMILL LIFT FOR EASY CLEANING
- HI-VIS END GUARDS FOR INCREASED SAFETY
- REMOTE SERVICE DIAGNOSTICS

- FLOOR LEVEL RAMPS TO ASSIST PATIENT ACCESS
- ADJUSTABLE CONTROLS POSITIONING
- CONTROL FROM PORTABLE DEVICES

Optional Extras

- ALTERNATIVE DOOR SWING
- EXTENDED RAMPS
- THERAPIST SEAT
- DOG ISOLATION PLATE
- POOL-FED SYSTEM
- STAND-ALONE: IN-GROUND
- SIDE DECK



Technical Specifications

Maximum user load	90 kg (198 lbs) without buoyancy
Water depth range	0 mm to 600 mm (24")
Speed range	0.2 – 12 kph (0.12 – 7.5 mph)
Fill/empty times	Approx 2 minutes to max depth
Temperature range	From ambient 40°C (104°F)
Treadmill dimensions (excluding display)	
Excluding ramps	L 2100 mm (83") x W 858 mm (34") x H 1265 mm (50")
Including ramps	L 3435 mm (135") x W 858 mm (34") x H 1265 mm (50")
Complete system weight	
Dry	650 kg (1433 lbs)
Full	2150 kg (4740 lbs)
Capacity	1500 litres (330 gals, 396 US gals)
Max distance between treadmill and plant equipment	8 m (314")
Power	240V single phase 50 hz 16A (60 hz option available)

Product Highlights



Warranty

24 month drive and controls warranty for peace of mind (terms apply).



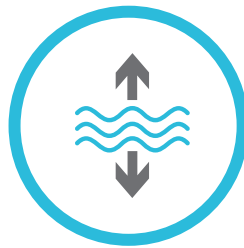
Water Treatment

Manual chemical dosing and UV filtration to maintain water quality. Water dump valve prevents fouled water returning to water tank.



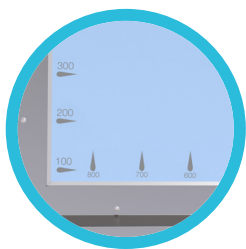
Belt Incline

Powered treadmill incline to focus on specific patient needs.



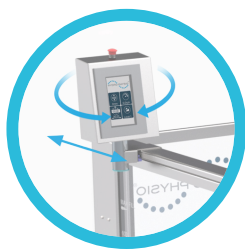
High Capacity Transfer Pumps

Rapid filling and emptying times enables you to see more patients.



Stride & Depth Indicators

Indicators add a visual marker reference to enable the clinician to gauge patient movement and recovery progress.



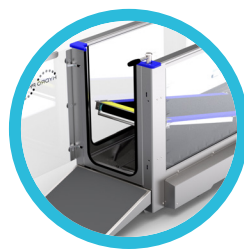
Touch Screen Console

Adjustable controls positioning for added convenience.



Side Platforms

Allow the clinician to accompany a patient in the treadmill in comfort and safety.



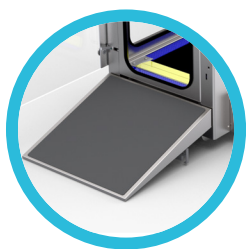
Easy Clean

Powered treadmill lift for easy sump cleaning.



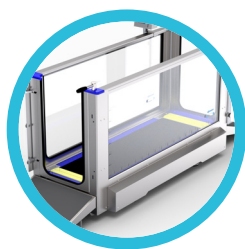
Pre-set Options

Intuitive controls for water, speed and incline with time and distance.



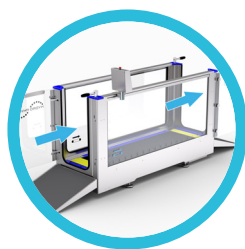
Access Ramps

Easy patient access with floor level ramps.



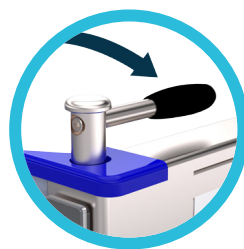
Hi-vis End Guards

Provides visual guide to therapists of training area.



Walk Through Design

Important for spinal cases and large breeds and can ease patient comfort and breed confidence.



Door Handle

Easy operation, two stage door latch for safety.



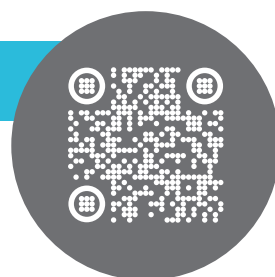
Control From Portable Devices

Remote operation using an app available for IOS or Android devices.

Arrange a Demonstration

See the difference for yourself!

Contact us today to arrange a demonstration at our Hydro Physio site and experience the quality, comfort and performance of our products first-hand.





Portable Device Control

- Total control using a portable device. All the functions from the touchscreen – control at your fingertips.
- Water level management
- Incline management
- Treadmill speed control
- Time and distance monitoring
- Maintenance and diagnostic functions



Arrange a site survey

Our expert team can visit your facility to identify your specific installation requirements. Following your free site survey, we will provide you with detailed layout drawings.

Remote Diagnostics and Servicing Plans



During your warranty period we offer complimentary customer technical support assisted by remote diagnostics to help keep your system operating as efficiently as possible. Following your initial 2 year warranty period, we offer a variety of service plans and packages as regular maintenance will ensure you maximise your investment and reduce potential downtime.

Call us to discuss service packages on: +44 (0)1952 885555

Hydrotherapy Pools

We also supply a range of hydrotherapy pools and accessories recommended for canine swimming. The pools are available in five sizes with internal and external patient ramps.



Call us to discuss your hydrotherapy needs



Speak to a member of the TECHNIK team today, to discuss how we can help make concepts into reality. Our large manufacturing site is located near Ironbridge, a World Heritage location in Shropshire.



Solution

Our Sales/Project Management team will advise on the best solution to suit all requirements.



Design

All designs are based on market requirements, whilst ensuring compliance with the relevant standards.



Manufacture

Units are manufactured in the UK at our modern, ISO accredited facility.



Installation

Our dedicated installation teams are trained to the highest standards (service limited to specific countries).



Support

Our in-house UK service team supports both customers and regional distributors.



Finance

Leasing options available (UK customers only. Distributors may offer their own agreements).



The TECHNIK Projects brochure is available to view and download online at www.technik-vet.com or call us today on +44 (0)1952 885555 to request a hard copy

TECHNIK®

TECHNIK Veterinary

Broseley, Telford, Shropshire, TF12 5JA.



A Proud Partner of HYDRO PHYSIO World Renowned Canine Hydrotherapy Treadmills

All prices quoted exclude delivery and VAT unless otherwise stated. TECHNIK Technology reserves the right to change prices and specifications without notice.

All orders are subject to TECHNIK Technology Terms and Conditions*

* Terms and conditions apply. Subject to status.



OHS 672496

FM 25162